

ERCO

# LED solutions for your museum.

**designboom**<sup>®</sup> architecture design art technology shop  
readers competitions product library interiors video interviews work

twitter facebook pinterest googleplus rss search  
newsletter (438,818)

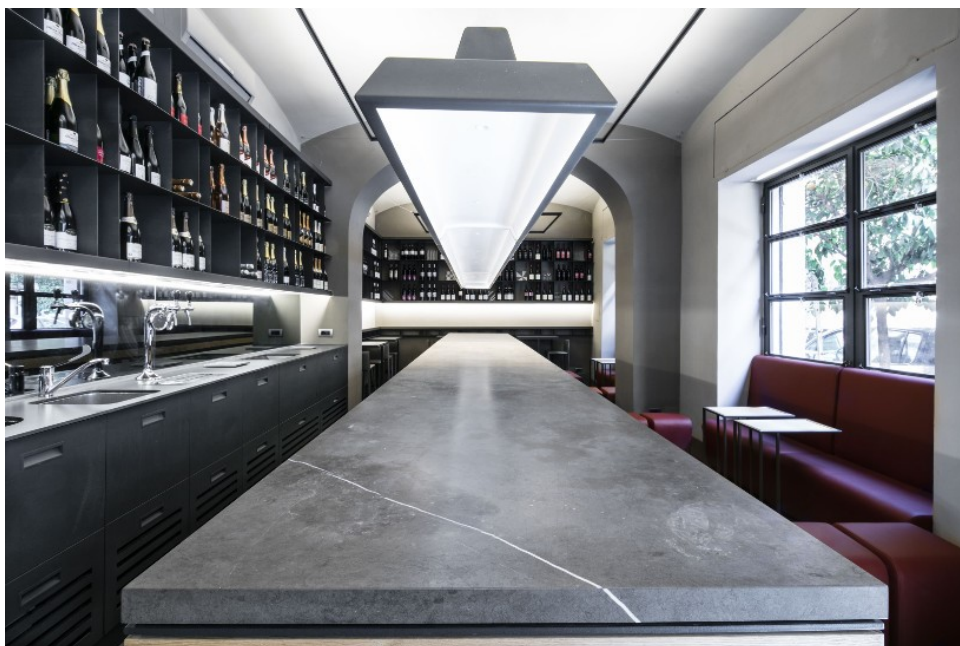


## insula studio completes 'la petrilleria' - an intimate italian bistro in rome

139 84 61 28

facebook twitter googleplus pinterest

insula studio has completed 'la petrilleria', a deli shop and bistro in rome. the restaurant, owned by sara and luca petrillo, is located in the city's elegant pinciano neighbourhood and provides a space where patrons can buy and taste genuine italian cuisine from the emilia-romagna region.



**imm**  
cologne

DISCOVER  
INTERIOR  
IDEAS

THE INTERNATIONAL  
INTERIORS SHOW  
16.-22.01.2017

publish your work

the eatery is located in the elegant pinciano neighbourhood

a compact space at just 63 meters squared, the bistro is dominated by a 7 meter long stone counter. in realizing their design, insula wanted to take advantage of the intimate atmosphere, rather than consider it a negative. 'la petrilleria' was designed with the aim to 'realize a very familiar and warm place, with a comfortable, relaxed aesthetic. a place to sit, have a drink and easily meet people and socialize' explain the studio.



a 7 meter long stone table dominates the space

a renovated vaulted ceiling adds height, and three full height, metal framed glass windows invite light into the space. the central stone counter anchors the eatery, and is illuminated by a long pendant lamp — the bistro's defining feature. by the windows are placed red leather boudoirs and poufs, that — along with iron frame coffee tables — define two 'chill-out' corners. in summer these areas are recomposed as two mini outdoor living rooms, with windows opening fully to the street.



the restaurant serves cuisine from the emilia-romagna region, where the owners are from

to emphasize the warm and relaxed atmosphere of 'la petrilleria', all the light sources are concealed. in addition to the central lamp, two suspended open metal frames are installed to softly uplift the ceiling with a dimmable lighting while the shelves are fitted with indirect track lighting. insula has employed refined materials to form a harmonious environment, with a strong chromatic dimension. starting from the fossena stone brown grey, all the furniture — designed by insula — features textured materials such as leather, wood and steel that provide a welcoming, tactile experience. the floor is paved with black grès tiles with a french herringbone pattern.

designboom © 2016 about us advertise contact us copyright info privacy newsletter cookies

## product library



more: sanitaryware



## restaurant interiors

(172 articles)



insula studio completes 'la petrilleria', an  
nov 09, 2016



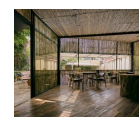
mathieu lehanneur carves cave-like opening inside  
oct 28, 2016



AMA's fucina restaurant in london features a bulbous  
oct 15, 2016



andré fu conceives a bamboo restaurant in china influenced  
oct 15, 2016



zhaoyang architects transforms office complex into  
oct 11, 2016





'the challenge was to evoke a convivial atmosphere, maintaining a contemporary identity' continue insula. 'to do this, we designed with passion and extreme care each elements and furniture's details of the project, from the form to the materials, to the colour palette. we love people to live in a place with a story, but a brand new one'



cosy red couches line the walls



in keeping with the locations intimate atmosphere, all sources of light are concealed

popular now architecture



reusable buildings constructed for COP22 climate  
nov 09, 2016



johnston marklee's sharon johnston interview at los  
nov 09, 2016



olson kundig embeds corten residence next to  
nov 09, 2016



architects of invention reveal copenhagen church  
nov 08, 2016

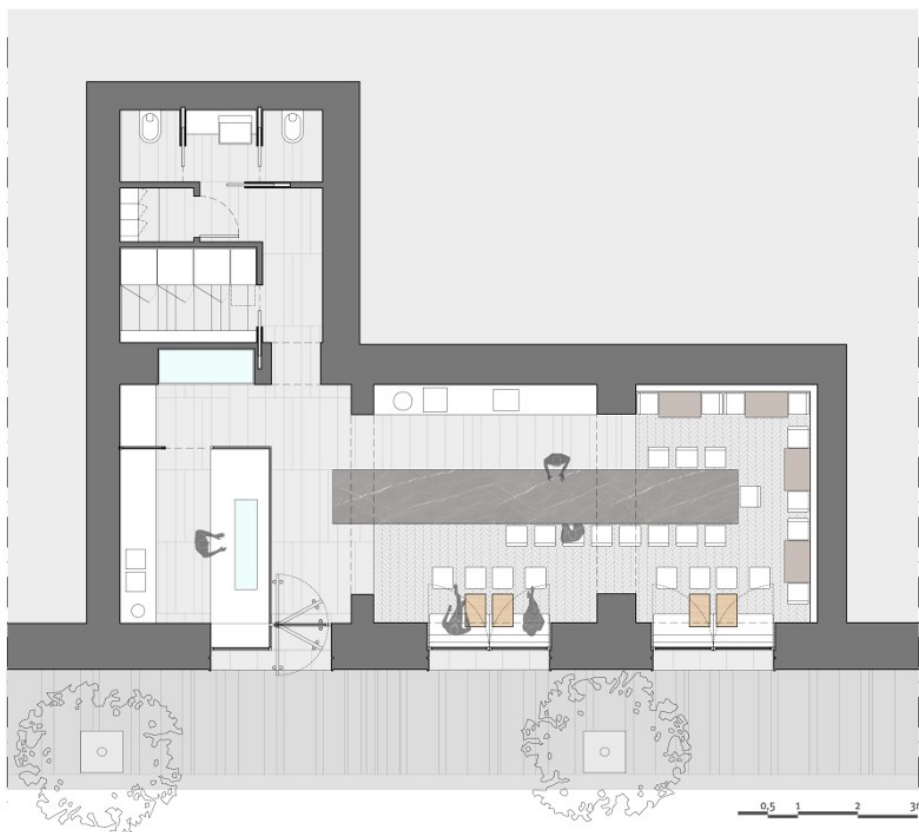


REX's proposed museum of the 20th century is a  
nov 09, 2016





the full length windows open like doors onto the street for summer time dining



a plan of the restaurant

#### project info:

location: rome

year: 2016

design: insula architettura e ingegneria srl (eugenio cipollone, Nicoletta Marzetti, Paolo Diglio)

interior design: Silvia Morozzi

area: mq 63

suppliers: cimarelli remigi, living srl, illuminati, inidraig, cemif srl

materials: mutina, oli, globo, trevisan, dyson

budget: 160,000 euro

photography: all images © luigi filetici

designboom © 2016

[about us](#)

[advertise](#)

[contact us](#)

[copyright info](#)

[privacy](#)

[newsletter](#)

[cookies](#)

